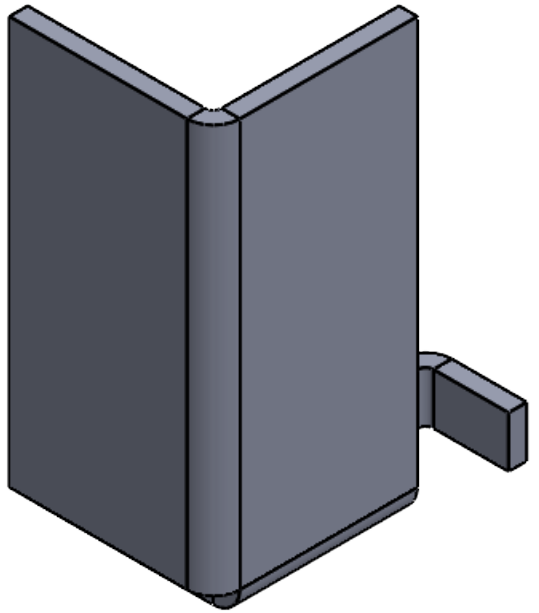
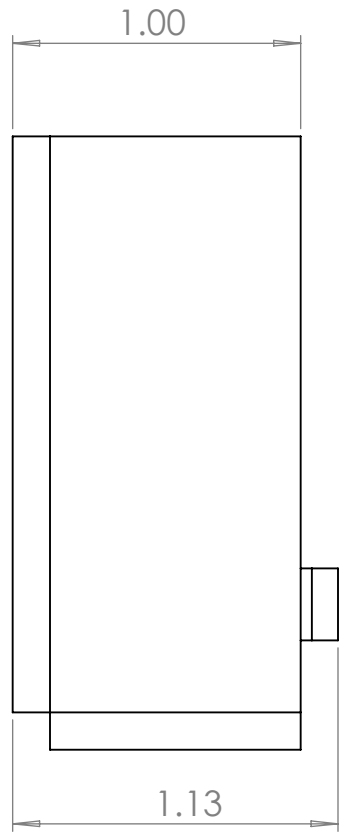
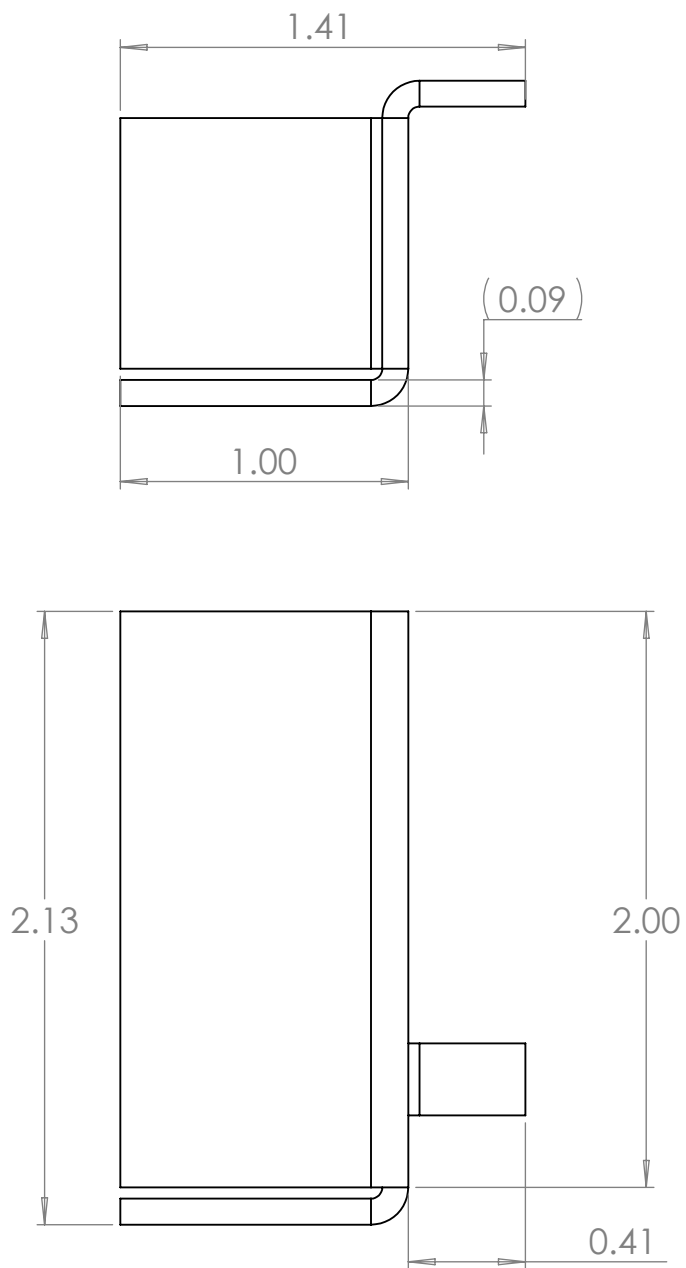


B


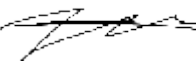


B

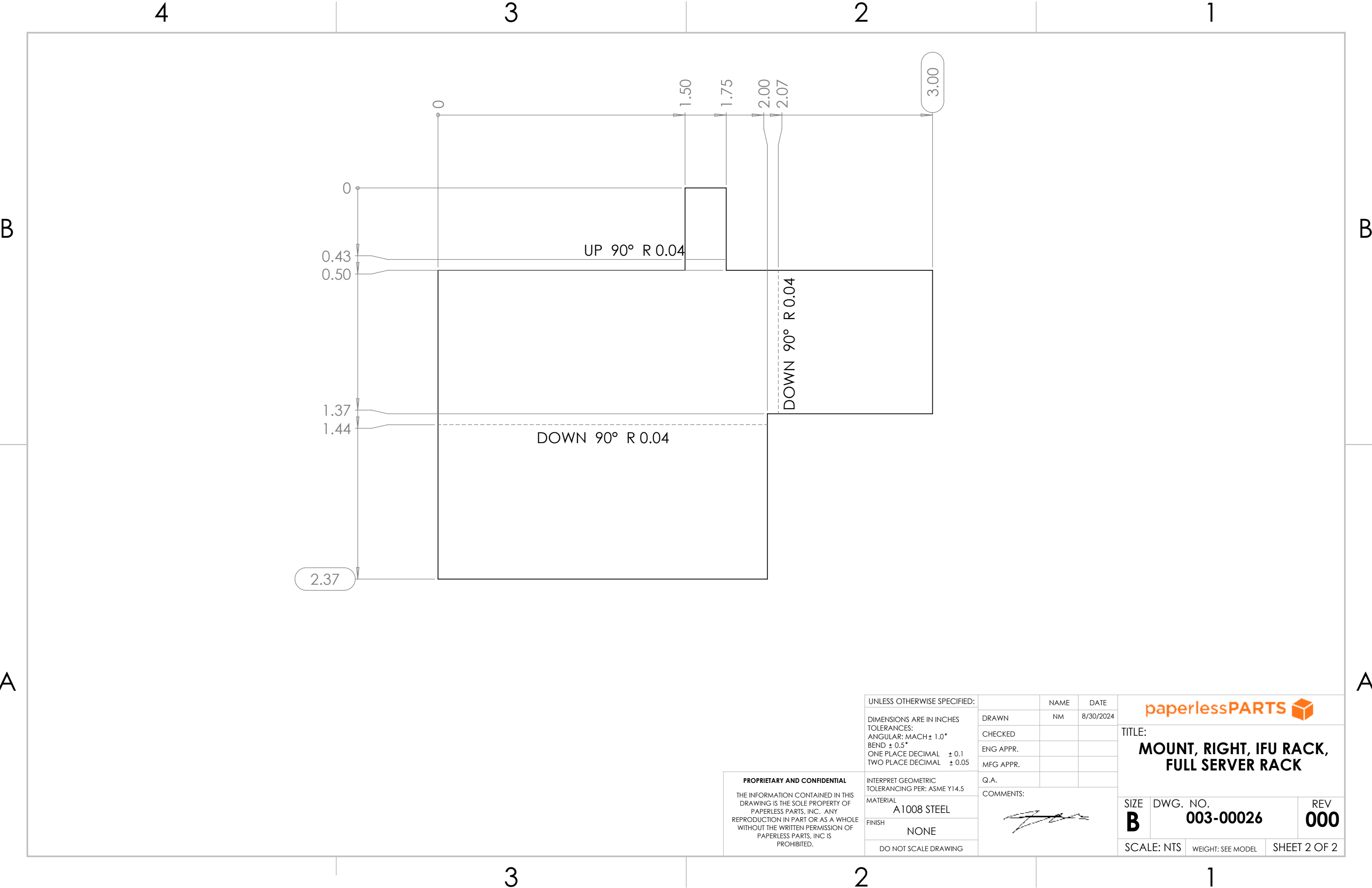
A

NOTES: UNLESS OTHERWISE SPECIFIED.
1. PARAMETRIC MODEL. ALL DIMENSIONS FURTHER SPECIFIED IN 003-00026.
2. FLAT PATTERN FOR PART SPECIFIED ON LAST SHEET OF DRAWING.
3. PART SHALL BE FREE OF ANY SHARP EDGES AND BURRS.
4. PART TO BE CLEANED OF ALL OIL AND DEBRIS.
5. MATERIAL: A1008 STEEL
6. FINISH: NONE
7. GAUGE: 13
8. PART SHALL NOT BE MODIFIED BY ANY PARTY OUTSIDE PAPERLESS PARTS, INC UNLESS WRITTEN OR EXPRESS APPROVAL HAS BEEN PERMITTED FOR THE PART.

PROPRIETARY AND CONFIDENTIAL
THE INFORMATION CONTAINED IN THIS DRAWING IS THE SOLE PROPERTY OF PAPERLESS PARTS, INC. ANY REPRODUCTION IN PART OR AS A WHOLE WITHOUT THE WRITTEN PERMISSION OF PAPERLESS PARTS, INC IS PROHIBITED.

UNLESS OTHERWISE SPECIFIED:		NAME	DATE	<div></div>		
DIMENSIONS ARE IN INCHES TOLERANCES: ANGULAR: MACH± 1.0° BEND ± 0.5° ONE PLACE DECIMAL ± 0.1 TWO PLACE DECIMAL ± 0.05		DRAWN	NM	8/30/2024		
		CHECKED				
		ENG APPR.				
		MFG APPR.				
INTERPRET GEOMETRIC TOLERANCING PER: ASME Y14.5		Q.A.		<div>TITLE:</div> <div>MOUNT, RIGHT, IFU RACK, FULL SERVER RACK</div>		
MATERIAL		COMMENTS:				
FINISH						
DO NOT SCALE DRAWING				SIZE	DWG. NO.	REV
				B	003-00026	000
				SCALE: NTS	WEIGHT: SEE MODEL	SHEET 1 OF 2


A



PROPRIETARY AND CONFIDENTIAL
THE INFORMATION CONTAINED IN THIS
DRAWING IS THE SOLE PROPERTY OF
PAPERLESS PARTS, INC. ANY
REPRODUCTION IN PART OR AS A WHOLE
WITHOUT THE WRITTEN PERMISSION OF
PAPERLESS PARTS, INC IS
PROHIBITED.

UNLESS OTHERWISE SPECIFIED:	
DIMENSIONS ARE IN INCHES	
TOLERANCES:	
ANGULAR: MACH ± 1.0°	
BEND ± 0.5°	
ONE PLACE DECIMAL ± 0.1	
TWO PLACE DECIMAL ± 0.05	
INTERPRET GEOMETRIC TOLERANCING PER: ASME Y14.5	
MATERIAL	A 1008 STEEL
FINISH	NONE
DO NOT SCALE DRAWING	

NAME	DATE
DRAWN	NM 8/30/2024
CHECKED	
ENG APPR.	
MFG APPR.	
Q.A.	
COMMENTS:	

paperlessPARTS 		
TITLE: MOUNT, RIGHT, IFU RACK, FULL SERVER RACK		
SIZE B	DWG. NO. 003-00026	REV 000
SCALE: NTS	WEIGHT: SEE MODEL	SHEET 2 OF 2